

Model Definition

GRQ-S4-315-RAL9010

GRQ Product Group

GRQ-Indicates an adjustable spherical nozzle.

S4 Diversion Direction Adjustment Type

O4-Indicates manual adjustment;

S4-Indicates electric actuator adjustment;

TA-Indicates temperature sensing mechanism triggers adjustment.

315 Nominal Specification

Nominal specification include : 100、125、160、200、250、315、400、630.

Among them, the nozzles of 100 and 125 specifications cannot be equipped with actuators.

RAL9010 Paint Color

RAL9010 is the factory standard color; Special colors can be painted according to customer requirements.

Application Description

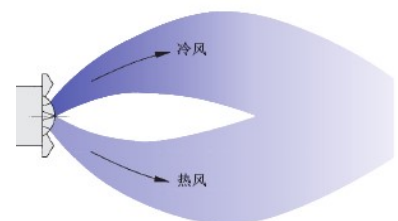
GRQ adjustable spherical nozzle is suitable for long-distance air supply in large space. It is usually side mounted and air supply. Set and adjust the air supply direction according to the air supply temperature difference, installation height and required jet range to meet the air supply effect of air conditioning under different working conditions. The adjustment range of the nozzle is $-30^{\circ} \sim +30^{\circ}$. At the same time, it is applicable to a wide range of air volume, and is suitable for large spaces such as airport, lobby, theater, station, library and workshop.



Generally, when cold air is supplied in summer, the air outlet is inclined upward; When supplying hot air in winter, the air outlet shall supply air obliquely downward to ensure good air organization.

Technical Features

- High speed jet air outlet mode;
- It is suitable for large space and long-range air supply;
- The diversion direction is adjustable, which can be manually adjusted, adjusted by electric actuator and triggered by temperature sensing mechanism;
- The air supply temperature difference is large, which is applicable to the air conditioning system with a temperature difference of $-10^{\circ}\text{C} \sim +15^{\circ}\text{C}$;
- The maximum air supply distance can reach 50m.



Material And Surface Treatment

- Nozzle: Aluminum;
- Decorative ring: Aluminum;
- Nozzle: Galvanized steel plate;
- The standard surface treatment is RAL9010 white painting.

Supply Form

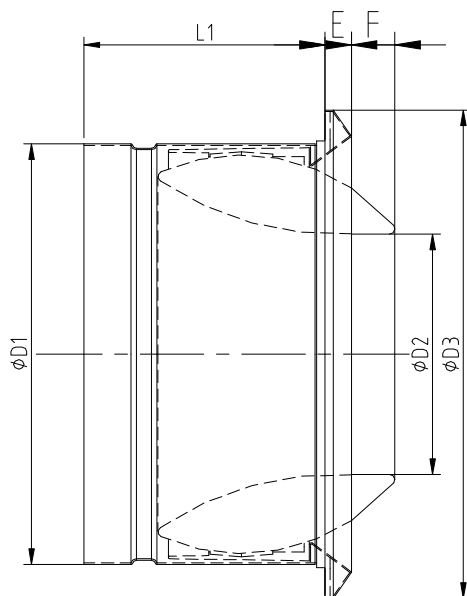
If necessary, the air outlet and electric actuator / temperature sensing mechanism shall be provided as a whole.

Specification And Size

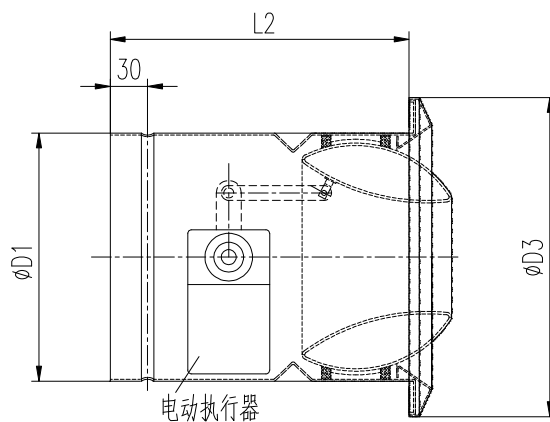
Specifications	ΦD1	ΦD2	ΦD3	E	F	L1	L2
100	98	50	146	15	-3	95	-
125	123	64	169	15	7	107	-
160	158	82	200	18	8	120	365
200	198	98	257	19	14	142	365
250	248	136	302	20	22	158	365
315	213	174	384	20	27	193	365
400	398	230	467	24	49	211	365
630	624	335	730	40	110	290	365

Remarks : 1. All dimensions are in mm.

2. If the installation requires a detailed drawing of specific dimensions, please contact our technicians.



GRQ-O4



GRQ-S4

Technical Parameter

Specifications	Technical Parameter					
100	Air volume m ³ /h	55	80	110	140	
	Outlet wind speed m/s	8	11	15	19	
	Resistance loss Pa	36	59	108	169	
	Noise value NC	-	-	24	32	
	Jet range m	3.6	4.6	6.1	8.2	
125	Air volume m ³ /h	85	128	170	210	250
	Outlet wind speed m/s	7	11	15	18	22
	Resistance loss Pa	35	60	105	159	228
	Noise value NC	-	-	27	32	38
	Jet range m	4.1	6.0	7.7	9.8	12.7
160	Air volume m ³ /h	140	210	280	350	420
	Outlet wind speed m/s	7	11	15	18	22
	Resistance loss Pa	36	69	110	166	235
	Noise value NC	-	23	32	38	42
	Jet range m	5.1	7.6	9.9	13.8	17.2
200	Air volume m ³ /h	220	330	430	550	660
	Outlet wind speed m/s	8	12	16	20	24
	Resistance loss Pa	37	76	115	175	233
	Noise value NC	-	24	33	40	44
	Jet range m	6.8	9.1	11.3	14.6	18.8
250	Air volume m ³ /h	350	520	700	870	1043
	Outlet wind speed m/s	7	10	13	17	20
	Resistance loss Pa	35	59	102	163	235
	Noise value NC	-	23	32	39	45
	Jet range m	8.5	11.5	13.6	16.4	22.8
315	Air volume m ³ /h	550	830	1100	1380	1660
	Outlet wind speed m/s	6	10	13	16	19
	Resistance loss Pa	30	55	99	145	208
	Noise value NC	21	25	32	38	46
	Jet range m	8.5	13.4	17.6	21.2	24.1
400	Air volume m ³ /h	890	1340	1800	2240	2680
	Outlet wind speed m/s	6	9	12	15	18
	Resistance loss Pa	30	51	92	145	208
	Noise value NC	23	31	37	41	47
	Jet range m	11.3	16.8	20.6	24.2	28.4
630	Air volume m ³ /h	2240	3360	4480	5600	6700
	Outlet wind speed m/s	7	10.5	14	17.5	21
	Resistance loss Pa	38	84	155	230	325
	Noise value NC	31	37	44	50	54
	Jet range m	24	31	37	43	50

Remarks : 1. The air velocity at the end of jet range in the above table is 0.5 m / s.

2. When the sound pressure level noise value in the table is lower than NC20, it will be displayed as "-".

3. For non-standard application and selection, please contact our technicians.